

HALEAD
海利得

2019



01 关于报告

2019 1 1 2019 12 31

(GRI Standards)

(CSSE)

**CASS-CSR40
GRI**

()



ISO14001 ISO9001

2020

!

高引良

03 关于我们

00206

201 5 2008 1

200

5



AAA

AAA

AAA

PET

HMS

PVC

2019

40136292

2019

3832269

2019

3036931

33%

65%

04 责任管理

	/	

CSR

CSR

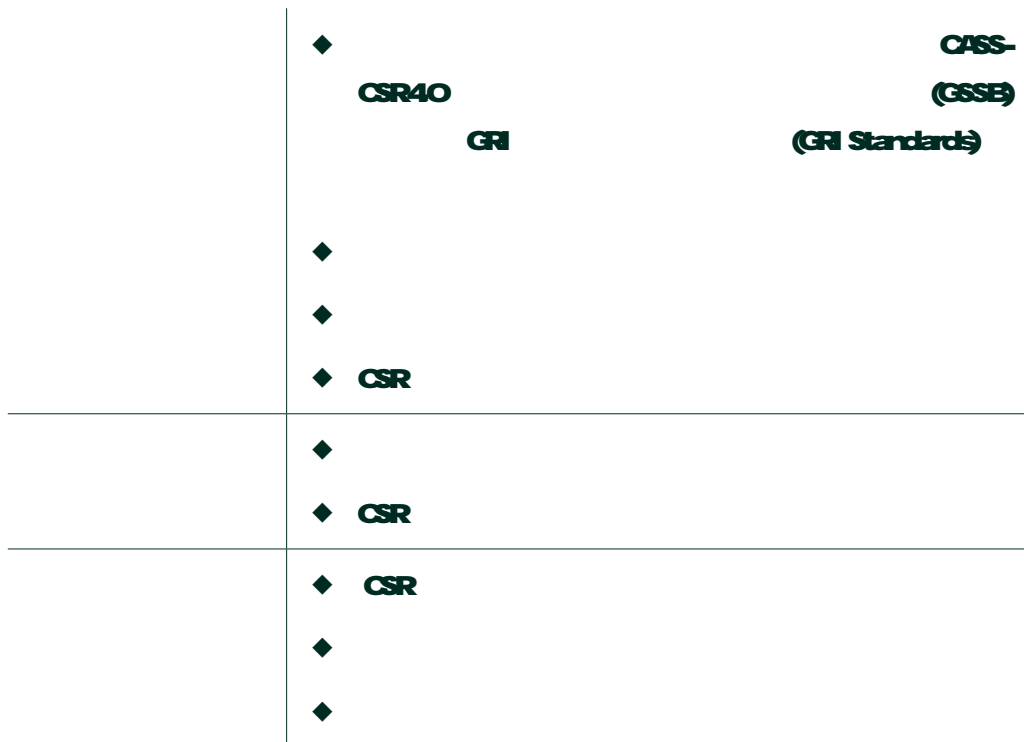
CSR

2019

**CASS-CSR40
GRI**

(GRI Standards)

(GSSE)

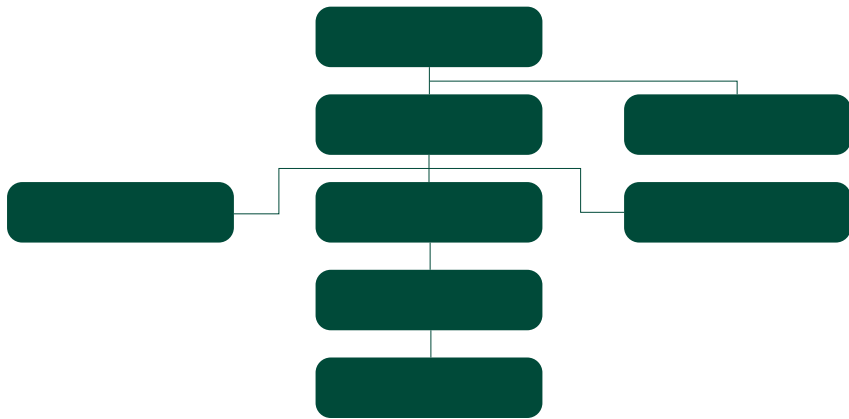




7 21 14 CSR :



05 投资者责任



2019

86

4

2019

9

7

3

9

7

3

2019

2019

8

500

5000

1

200

2019

8

2019

500

200

10000

5000

2019
31
1,223,028,645
64,521,425
1,158,507,220
10
1.00
115,850,722
2017 **2019**
87%
860

2017	000	313,762,254.78	000%	000	000%	000	000%
2018	482,635,143.80	351,225,586.61	137.41%	56,981,893.33	16.22%	539,617,087.18	153.64%
2019	115,850,722.00	327,092,961.74	35.42%	205,270,390.57	62.78%	321,121,112.57	98.17%

2019

	2019	14	1
2018	2	14	463456
23816		514%	

2019

14

2019

46345600

2019

2381600

2019

514%

2019

	2019	33
41	34	227

2019

33

2019

34

2019

227

2019

41

2019

ERP

NC

100%

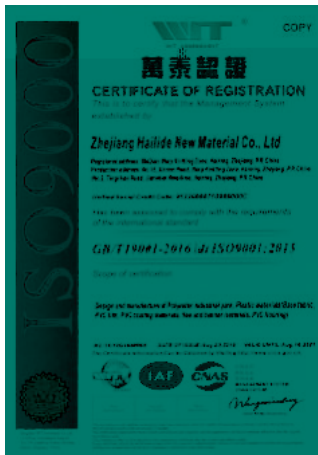


2006

ISO9001

2012

IATF16949



2019



100%

100%

3000m²

5000m²

100 /

1 /

2019

1214877

.

6

6

1214877 6 6

2017-2019

1

1

2

JBT 13293-2017		
TZZB0250-2017		
TZZB0976-2019		
TZZB1451-2019		

2019

6

1				201910447232.6	
2				201910447241.3	
3				201910448026.5	2019/5/27
4				201910447232.4	
5				201910447251.7	
6				201910448037.3	



9049%
IATF16949
2019
(
MSDS COA)

2019 167
100%

2019

9049%

2019

100%

2019

14

3

2019

1

2019

5

2019

07 供应链责任

CSR

CSR

A B C D

C

(

)

D

C

SRM

	CSR
	KA ;
	;

CSR

2019

2019

2019

32

3

2019

85

404%

08 环境责任

2008

ISO14001

ISO14001

ISO50001



2019

407070VWh

29796500m²

21568

822149

88965



1 100 Y Y2 YE3

3577.88kW

2018 1900 kWh 3% 2019 57 kWh

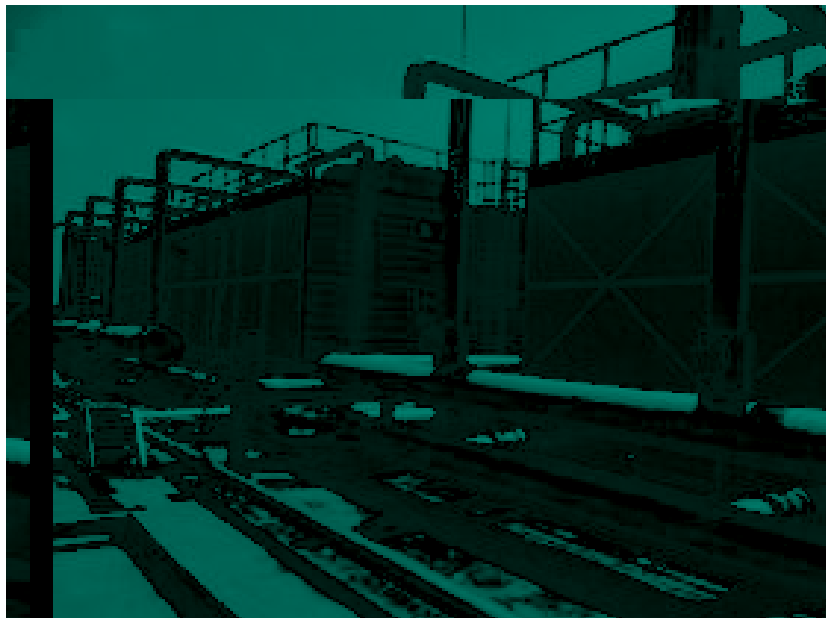
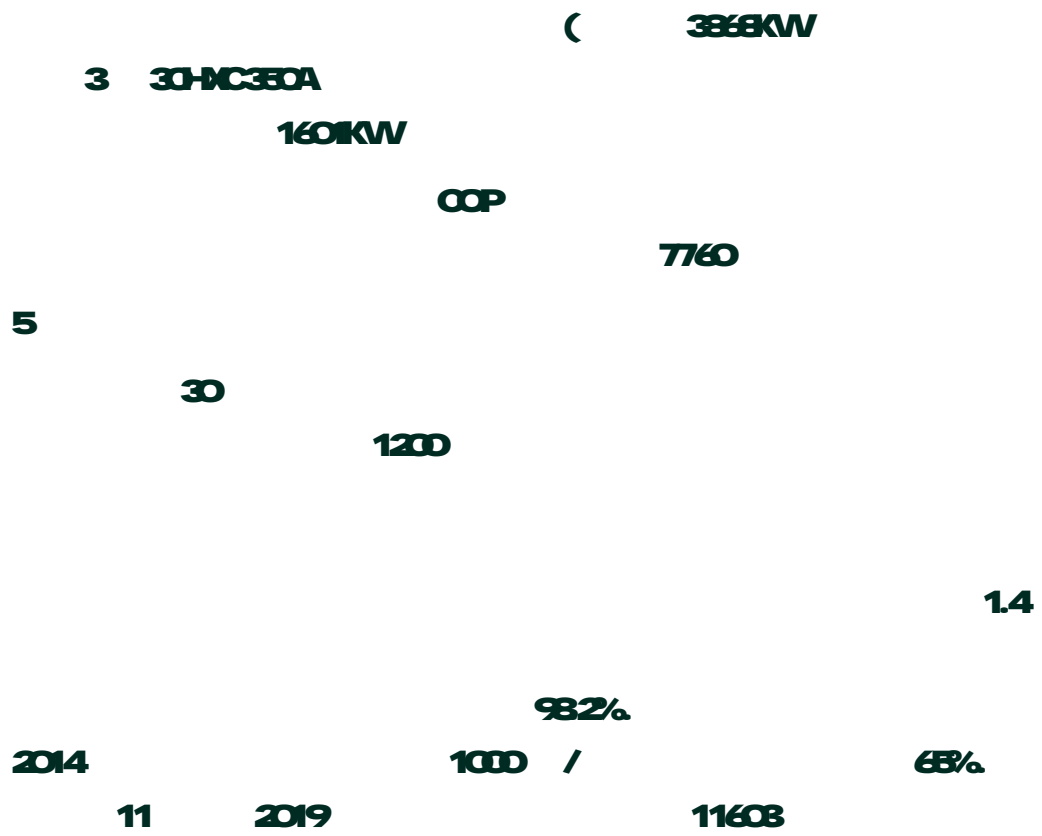
2 10 6 LS25-3ECHVCSULL

131 kWh

3 40

21.1 kWh

4 230 1268kW



2016
300
30 /
2019 **RTO** **220**
5
+

		2017	2018	2019
		48600	54530	63500
		15084	1332	0792
		10497	03175	02213
		363780	293051	333000

RTO

O₂ DMF RTO
870 002 H₂O

80%

304%

RTO

9343% 9614%

RTO

9343% 9614%



2017	81.78	6933	77515
2018	11882	64306	761.88
2019	221.9	53166	75656

600 /
195 /
600 /

1000 /
400 /

A202

PH

- -

-

- -50% 50%
+ +

- -
+



2017 9

3304B1-2017-1008

3304B1-2017-0807.



4
1300 kWh
1166 kWh

1 13MW
2019

2019

11656035th



2019

ERP CRM SRM VMS

LED

100%

2019

2269

2136

990%



2019

2136

2019

2269

99%

09 员工责任

()

2019

2019

100%

100%

100%

100%

100%

100%

100%

			2019	
1395	1253	898%		76
73	961%			
			2019	
525	55		215	488
12			30	31
				-

2019

310

2862

54905

2019

3911

31.9

2862

54905

3911

31.9

/

2019		287	268
10	9		264
245	13	6	
1078	1008	12	3

2019

2019	922	021.
-------------	------------	-------------

2019	37	9124	3M
-------------	-----------	-------------	-----------

537 1610 1753 1814 120
21087 3M 15600 3152
64% 16%

2019 555
100%

2019 0
100%

0

100%

100%

2019

1259

2019

19



100%

2019

2/20

39

100%

635

39

635

2/20

100%

2019

8210%

8210%





10 社区责任





2020

2020

2020

2020

SD

2020

2020

:

:

:

:

:

:

:

:

:

		CASS-CSR40	GRI Standard
		P1.2,P1.3	102-45, 102-46, 102-52,102-54
		P21,P22,P31,P32	102-14,102-15
		P41,P42,P43	102-1,102-2,102-3,102-4,102-5,102-7
		G1.1,G1.2	102-16
		G32,G33	102-18,102-19,102-20
		G61,G62	102-40,102-42,102-21
		G61	102-44
		M1.1,M1.2	102-24
		M1.4	
		M1.5	
		M1.4/M2.13	102-2,418-1
		M2.3	102-2,206-1
		M1.1	
		M1.7	102-7,201-1
		M1.3	102-2,205-2,205-3
		M2.1,M2.2	102-2,416-1,416-2
		M2.2	102-2,416-1,416-2
		M2.4,M2.5,M2.6,M2.7	
		M2.4	
		M2.5	
		M2.4	
		M2.6	
		M2.5	
		M2.1,M2.2	102-2,416-1,416-2
		M2.9	
		M2.5	

		CASS-CSR40	GRI Standard
		MB1	102-16
		MB8,MB9,MB10,MB11	102-2,302-2,414-2
		MB12	302-1,302-2,414-1,414-2
		S44	102-2,204-1
		MB6	102-2
		E11	102-2
		E23,E24,E25,E27	102-2,302-1,302-2,302-3,302-4,302-5
		E19	102-2
		E212,E213,E214,E215,E216,E217	102-2,302-4,302-2
		E218,E219	
		E12	
		E224	102-2
		E31,E32	
		E15	
		S21,S22,S25,S43	102-8,102-3,405-1,405-2,406-1,102-2,204-1
		S22,S23,S27,S28,S29,S210	405-1,405-2,406-1,102-41,102-2,409-1,201-1,401-2
		S24	407-1
		S214,S215,S216	102-2,404-2
		S211,S212	102-2,402-1,402-8
		S31,S32,S35,S36	102-2,402-1,402-8,402-9,402-10
		S33	402-5
		S217,S218,S219	

		CASS-CSR40	GRI Standard
		S412	
		S410,S411	
2020		A1	
		G51,G62	102-27,102-21,102-43
		A5	102-55
		A6	102-53
		A6	102-53

:

:

1

:

2

:

3

:

4

:

5

:

:

1

?

2

?

3

?

:

:

:

:

:

: _____ e-mail: _____

: _____

: _____

:

05138716999

00206@halead.com

18

0573876999

05738761999

www.halead.com

:00206@halead.com